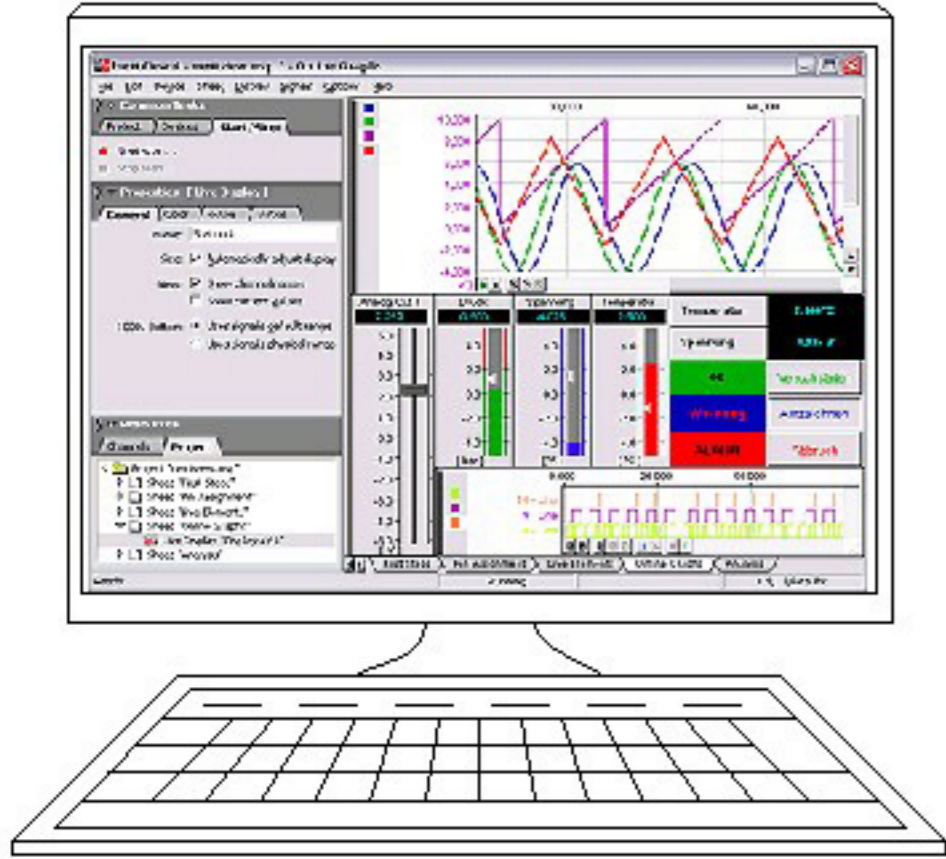
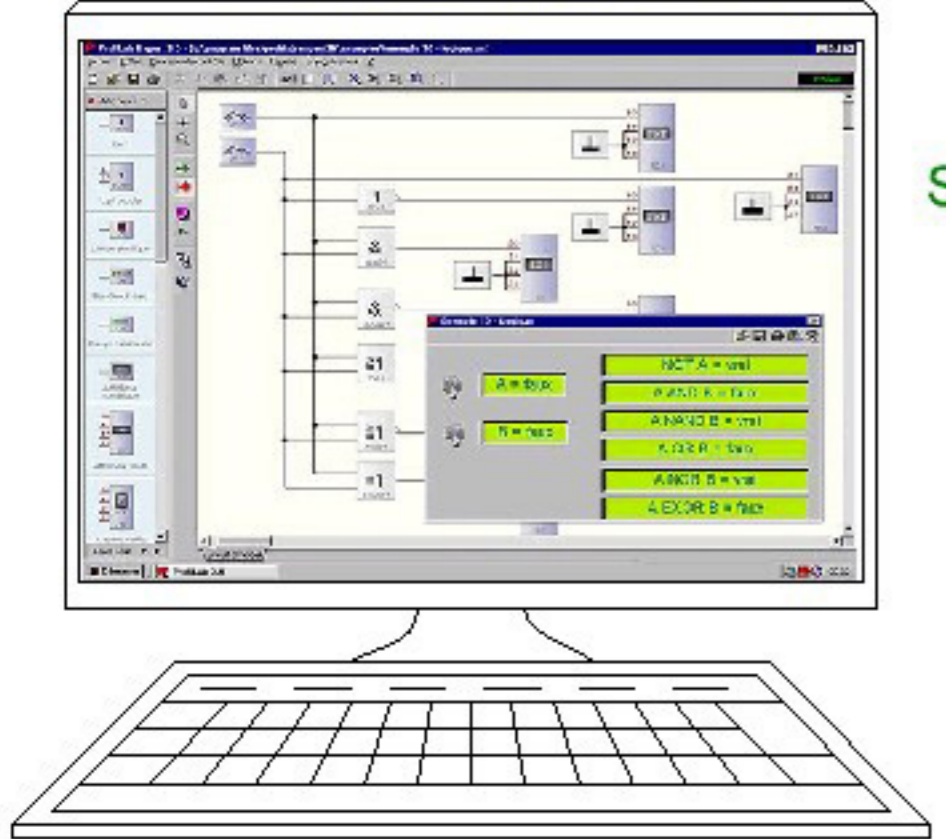


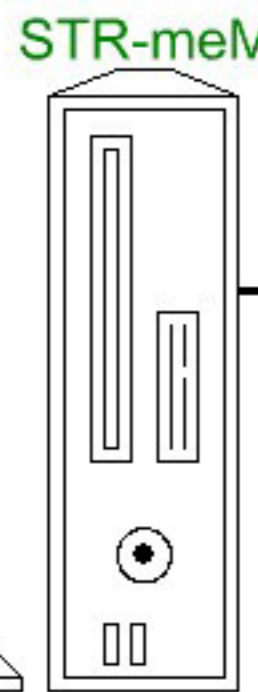
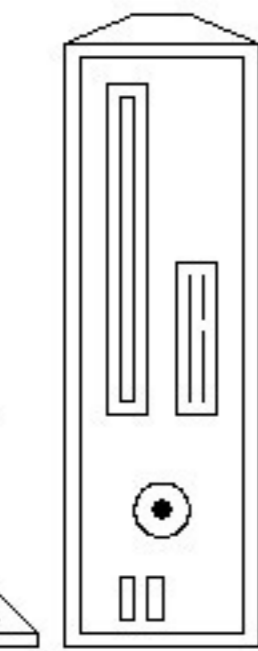
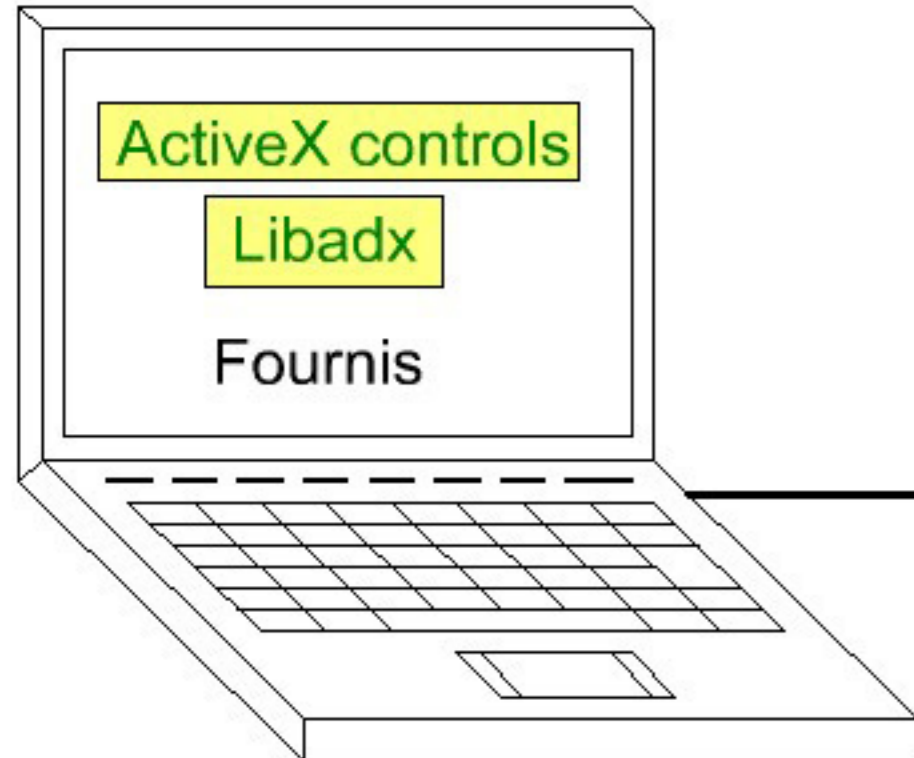
NextView4 Pro/Lite/Live



Profilab-Expert 4.0



Langages Prog.



Fiches ZU25ST+ ZU37ST
Confection cable

USB-AD

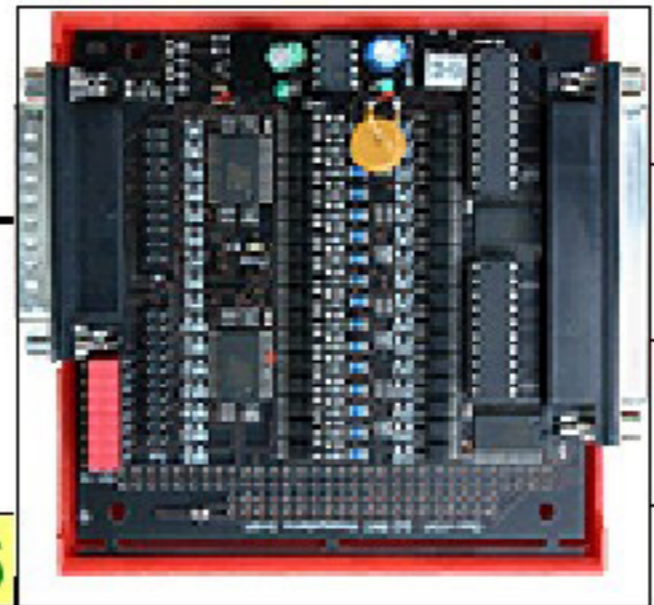
Module 16 Entrées/Sorties analogiques sur port USB



Lecture données ~10/sec.
suivant logiciel
et config. matériel

Amont

Aval



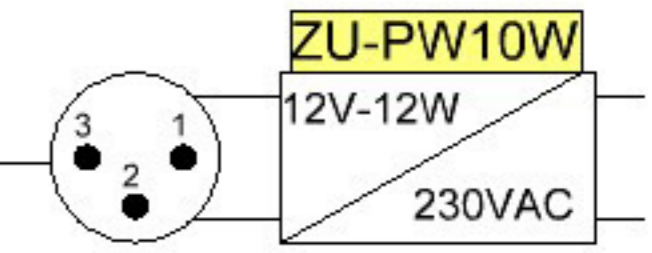
IO16

Séparation galvanique amont/aval
Masses communes côté aval

8/16 Sorties Optocouplées sur SubD 37br.
7 - 35 Vdc / 0.25A (Max0.8A/8Bit)

8/16 Entrées Optocouplées sur SubD 37br.
7 - 35 Vdc / 10mA max. (>4,5Vdc High)

Alimentation Platine 7-35Vdc



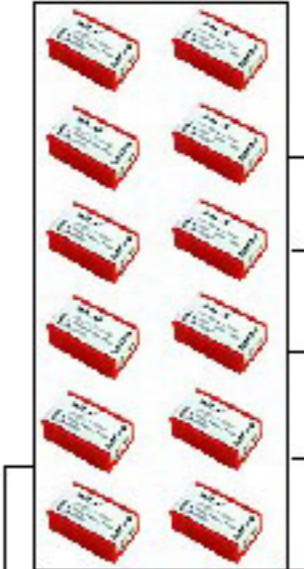
BP16



2 Fiches ZU37ST
Confection cable

Fiche ZU37ST
Confection cable

Pas de séparation galvanique amont/aval



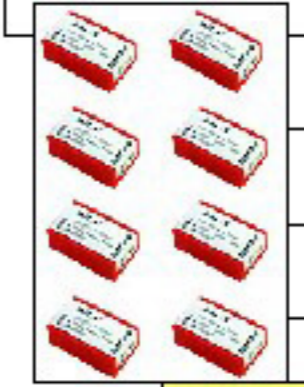
- ↳ MAL-UI Entrée +/-1V/5V/10V/20mA
- ↳ MAL-PT100 Entrée PT100 2fils
- ↳ MAL-THR Entrée TC K
- ↳ MAL-R1K Entrée 0-1kOhm

MAL...

ZUKA37SB

OU

Séparation galvanique amont/aval
Séparation galvanique des canaux.



- ↳ MAL- ISO50 Entrée +/-50VDC
- ↳ MAL- ISO10 Entrée +/-10VDC
- ↳ MAL- ISO5 Entrée +/-5VDC
- ↳ MAL- ISO1 Entrée +/- 1VDC/20mA

MAL-ISO...

Entrées sur bornier

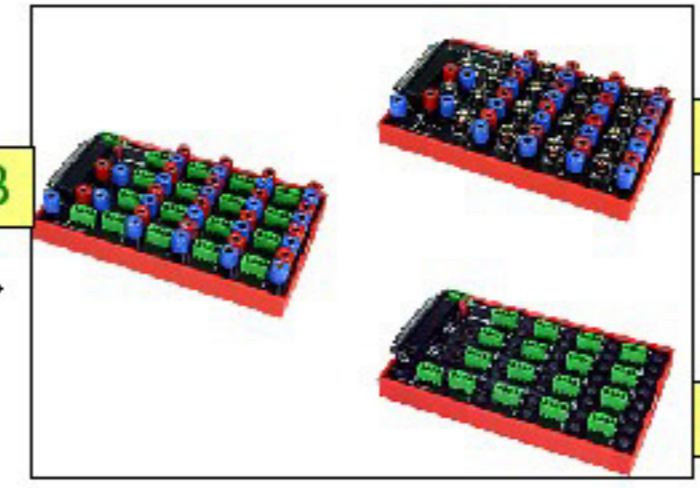
Alimentation Platine 9-45Vdc

BP2
BP2
BOX



ZUKA37SB

ZU37CB



ZU37BB

ZU37CO